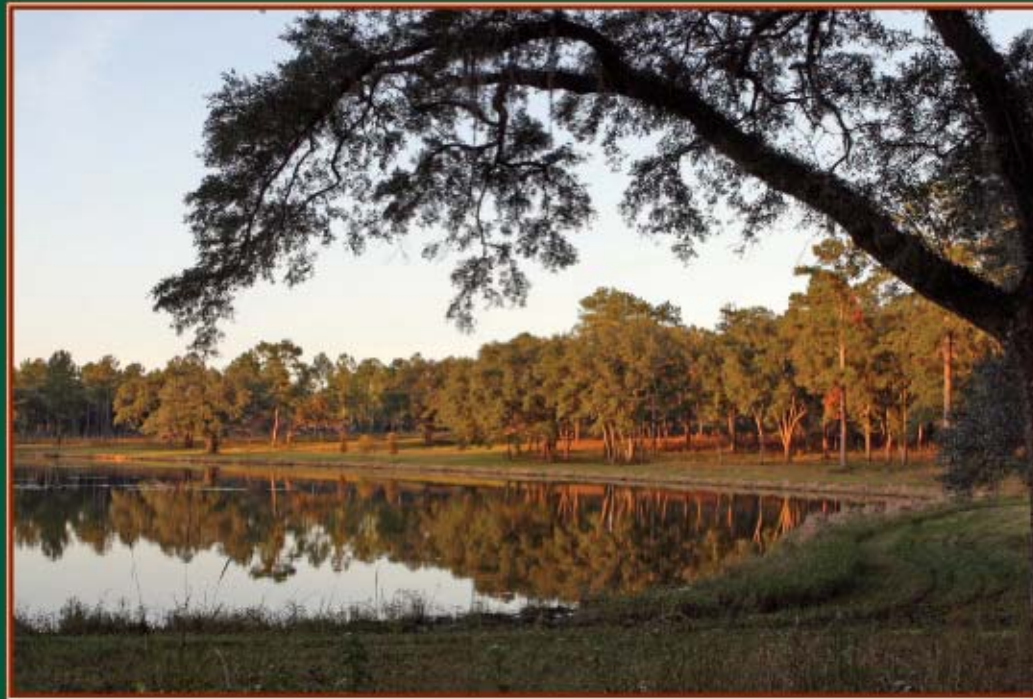


# CENTERVILLE

*A Conservation Community*



*A Legacy Community by Conservation Community Group*

# A Vision

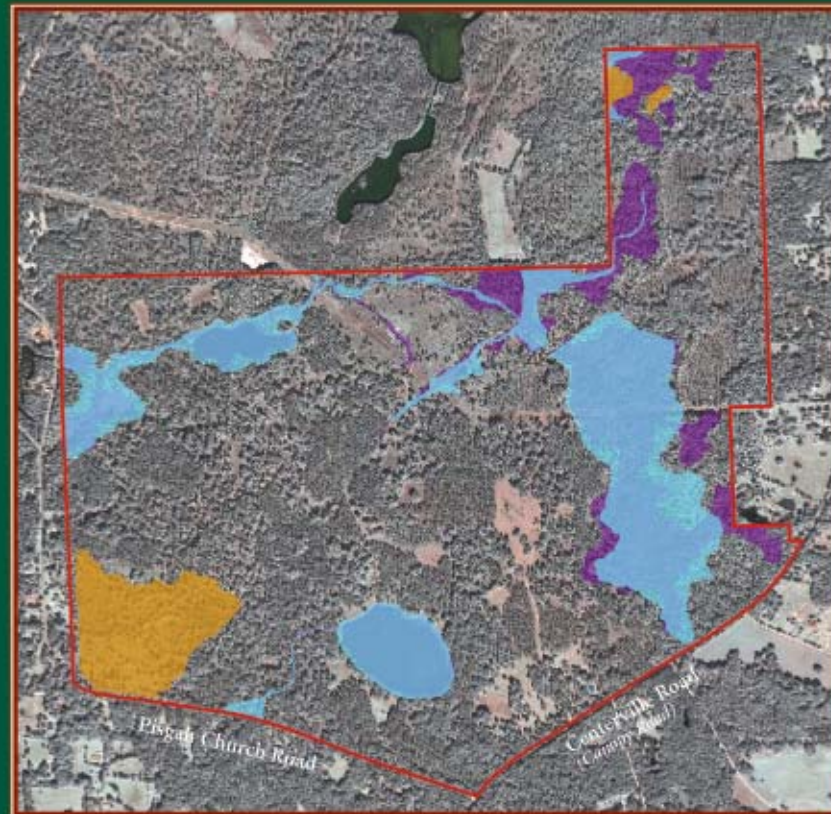


# Lifestyle Community



# Designing a Conservation Community

**Step 1: Identify the Land that Should be Permanently Protected**



# Designing a Conservation Community

**Step 2: Locate House Pads so Views are Maximized**



# Designing a Conservation Community

## Step 3: "Connect the Dots" with Streets and Trails



# Designing a Conservation Community

## Step 4: Draw in the Lot Lines

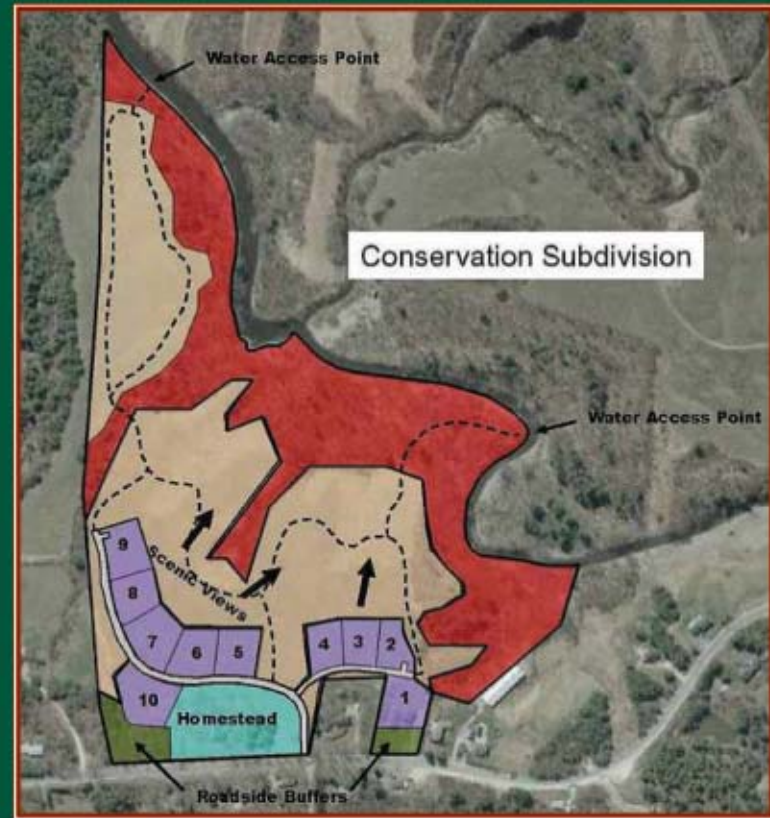


# Groundbreaking





# A Conservation Community vs. A Conventional Subdivision



# Benefits of a Conservation Community

1. Preserves Wildlife and Ecosystems
2. More Attractive
3. Gratifying to be a part of a legacy
4. More Marketable



# Challenges with a Conservation Community

1. Additional Time
2. Additional Capital
3. Level of Care
4. Delays
5. Additional Documents
6. Additional Sales Skills



# Specific Challenges

## 1. Gopher Tortoise Preserve



# Specific Challenges

## 2. Rain Gardens & Stormwater



# Specific Challenges

## 3. Public Pedway



# Specific Challenges

## 4. Pisgah Church Road



# Specific Challenges

## 5. High Quality Successional Forest





# Specific Challenges

## 6. Final DRC Meeting



# A Dream Realized

