



Leon County

Board of County Commissioners

301 South Monroe Street, Tallahassee, Florida 32301
(850) 606-5302 www.leoncountyfl.gov

Purchasing Division
2284 Miccosukee Road
Tallahassee, Florida 32308
(850) 606-1600

Commissioners

BILL PROCTOR
District 1

JANE G. SAULS
District 2

JOHN DAILEY
District 3

BRYAN DESLOGE
District 4

BOB RACKLEFF
District 5

CLIFF THAELL
At-Large

AKIN AKINYEMI
At-Large

PARWEZ ALAM
County Administrator

HERBERT W.A. THIELE
County Attorney

February 20, 2009

Bid Title: Leon County Sheriff's Heliport Addition
Bid No: BC-02-25-09-20
Opening Date: Wednesday, February 25, 2009 at 2:00 PM

ADDENDUM #4

Dear Vendor:

This letter serves as Addendum #4 for the above referenced project. Please note the following:

1. Attached is the Revised Drawing M-2.

Acknowledgment of this addendum is required as part of your bid submittal. Failure to acknowledge this addendum may result in rejection of your bid.

Should you have any questions, feel free to call me at (850) 606-1600.

Sincerely,

A handwritten signature in black ink, appearing to read "Keith M. Roberts".

Keith M. Roberts
Purchasing Director

REVISIONS

1	1/31/08	CODE COMMENTS
2	1/16/08	OWNER CHANGE
3	2/19/09	R.F.I.

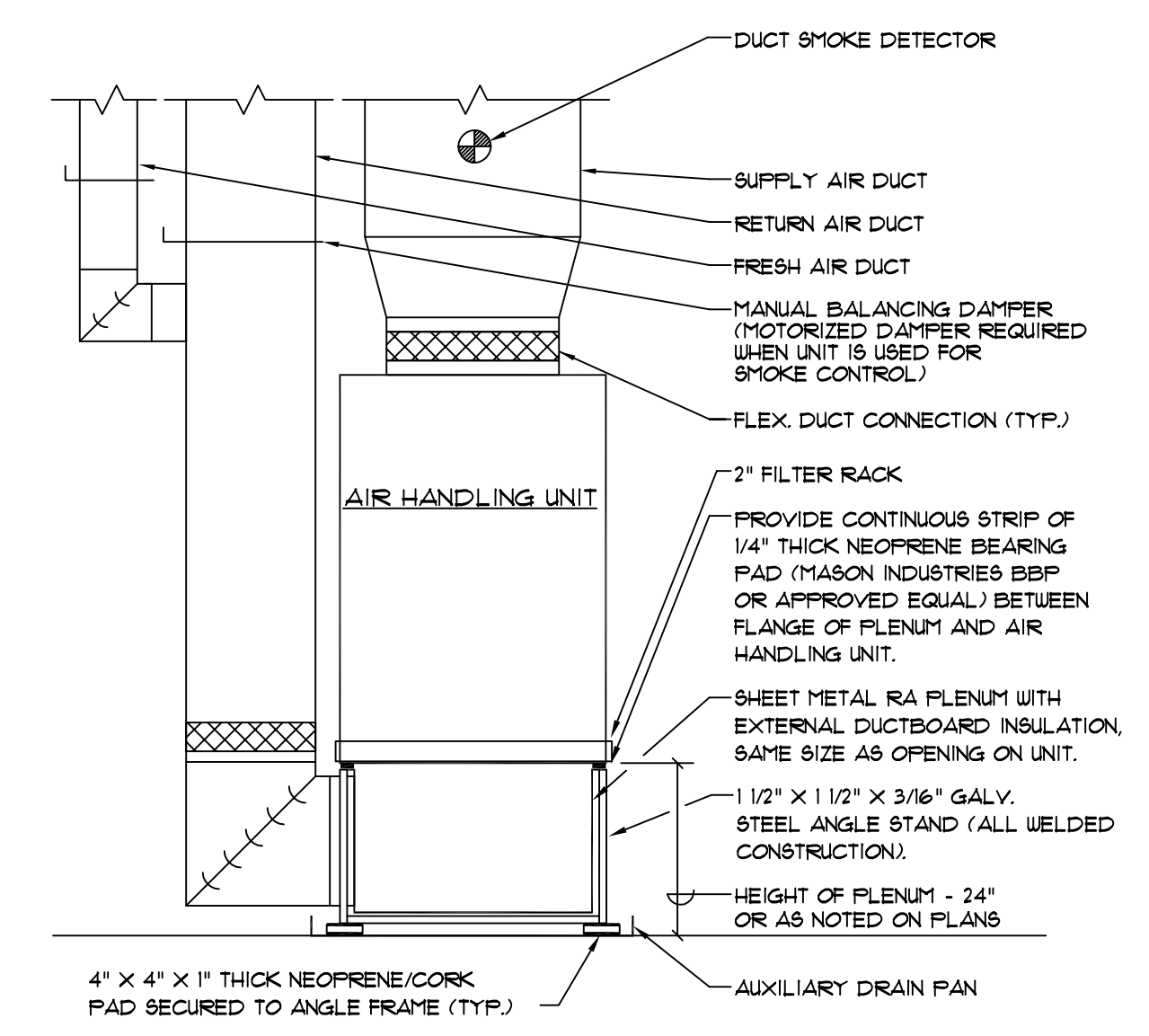
DATE	1/31/08
DRAWN	ABH
CHECKED	R.F.W.
JOB NO.	2702

Winton Engineering, P.A.
Robin Winton, P.E.
125 Lee Ave. Suite A
Tallahassee, FL 32303 850-894-9376
FL #96200

EXHAUST FAN SCHEDULE

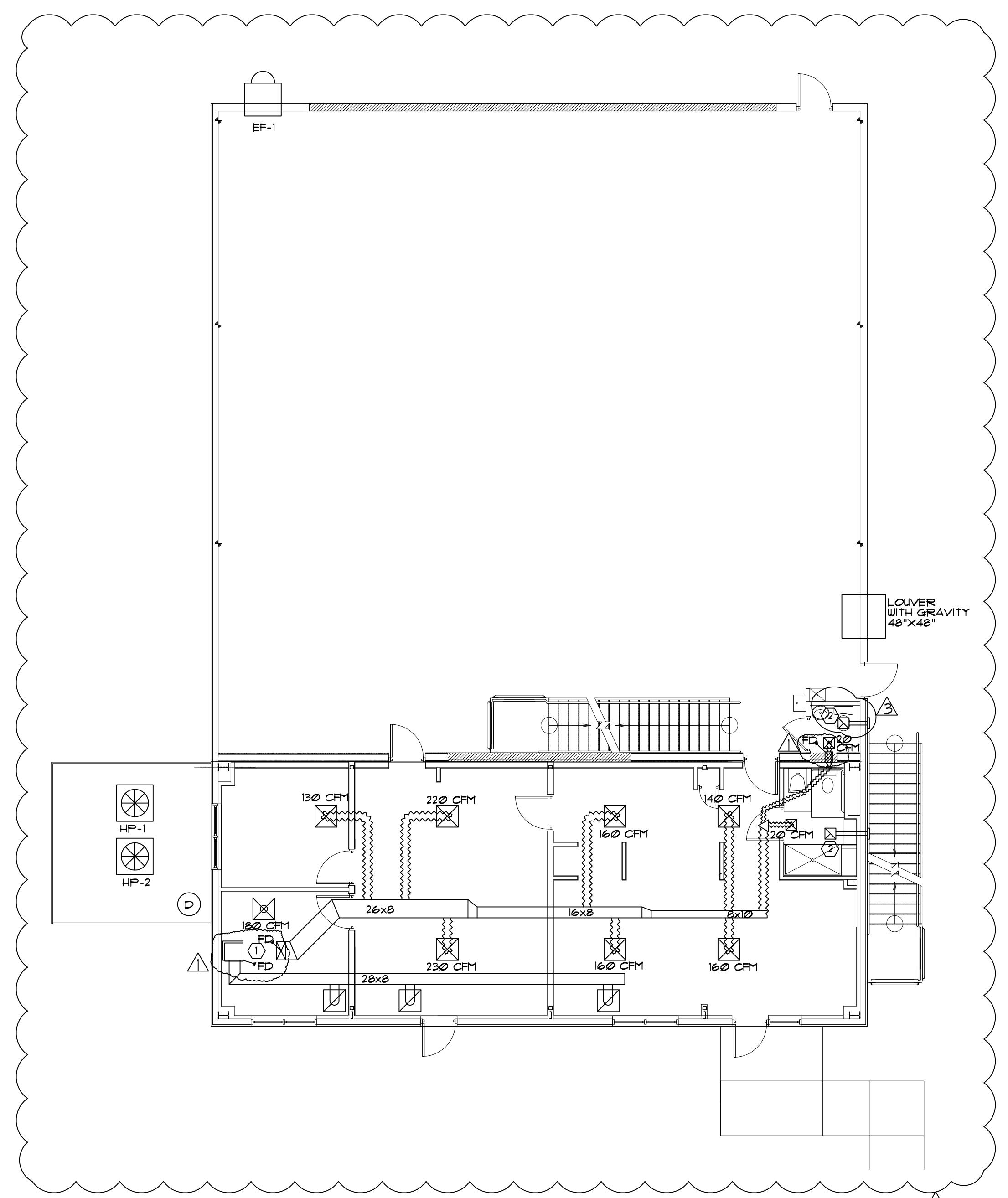
UNIT DESIGNATION		EF-1
AIR FLOW	CFM	180
STATIC PRESSURE	IN. WC	0.25
FAN MOTOR POWER	HP	0.03
FAN SPEED	RPM	1350
DRIVE		DIRECT
SONES	SONES	4.1
WEIGHT	LB'S	26
ELECTRICAL CHARACTERISTICS	V/PH	120/1
MANUFACTURER		GREENHECK
MODEL NUMBER		50-10-D

- NOTES:
1. MOUNT ALL EXHAUST FANS IN ACCORDANCE WITH MFG INSTRUCTIONS.
 2. PROVIDE FAN SPEED CONTROLLERS FOR ALL EXHAUST FANS.
 3. WIRE ALL EXHAUST FANS DISCONNECT SWITCH.



- NOTE:
1. PROVIDE A FLOAT SWITCH IN THE AUXILIARY DRAIN PAN INTERLOCKED WITH AHU FAN.
 2. PROVIDE CLEANOUTS ON CONDENSATE DRAIN.
 3. FILTERS LOCATED IN UNIT. PROVIDE FOR 2" FILTER RACKS.

VERTICAL AHU ON RA STAND/ PLENUM
N.T.S.



1 FIRST FLOOR MECHANICAL PLAN
SCALE 1/8"=1'-0"

- KEYNOTES:
- 1 UP TO UNIT ON MEZZANINE.
 - 2 EXHAUST FAN TO BE COOK GC-140 WIRE TO LIGHT SWITCH AND PROVIDE BACK DRAFT DAMPER